

# THE HOUSE OF BERNARDA ALBA

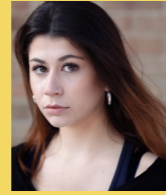
NOV 2020  
**THE COMPANY**

- BA (HONS) ACTING
- BA (HONS) COSTUME AND PERFORMANCE DESIGN
- BA (HONS) MAKE-UP FOR MEDIA AND PERFORMANCE

BY FEDERICO GARCIA LORCA

## CAST

A WIDOW  
**BERNARDA ALBA**



AMBER L JACOBS

BERNARDA'S MOTHER  
**MARIA JOSEPHA**



MADELEINE PHILPOTT

BERNARDA'S SISTER  
**PRUDENCIA**



AMELIA STONE

BERNARDA'S HOUSEKEEPER  
**PONCIA**



MADIGAN WILLOUGHBY

BERNARDA'S SERVANT  
**CRIDA**



APRIL QUIRKE

BERNARDA'S DAUGHTERS

**ANGUSTIAS**



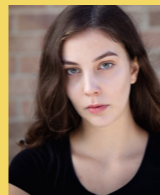
ADA YARAR

**MAGDALENA**



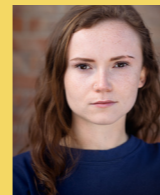
NELL WEIK-CLARK

**MARTIRIO**



UNA REITERE

**ADELA**



JASMINE ARMSTRONG

**AMELIA**



JULIA ABBISS

ASSISTANT DIRECTOR  
 SAUL BACHE

DIRECTOR\*  
 DAVID O'SHEA

## DIRECTION AND DESIGN

LIGHTING DESIGNER\*  
 JOE MYLES

## HAIR & MAKE-UP

MAKE-UP & HAIR ASSISTANTS

KIRSTY BATCHELOR  
 ALICIA DAY  
 KATIE FITZGERALD  
 OLIVIA HERBERT

HOLLY HERN  
 TARA LLOYD  
 ASTA OLAFSDOTTIR  
 CHARLOTTE RIDDEL

MAKE-UP &  
 HAIR DESIGNER AND  
 SUPERVISOR  
 MELISSA HUTCHISON

## TECHNICAL

LIGHTING OPERATOR  
 SAUL BACHE

SOUND OPERATOR  
 NICHOLAS LAMY

CAMERA OPERATORS  
 ED GARROD  
 JOE GREENSLADE

VISION MIXER AND  
 VIDEO EDITOR\*  
 PHIL PEEL

COSTUME DESIGNER  
 ELLÉ VINCE

## COSTUME

COSTUME  
 SUPERVISOR  
 HEATHER JONES

ASSISTANT COSTUME  
 SUPERVISOR AND  
 RUNNING WARDROBE  
 JAMES KUCHAR

SET DESIGNER  
 SOPHIE MILLS

## SET & PROPS

LEAD SCENIC ARTIST  
 TEDDY BOSWELL

SCENIC ARTISTS  
 ISABEL COHEN  
 FRANKIE GIGGINS  
 SOPHIE MILLS  
 ANNIE TURNER  
 JULIA WOJCIECHOWSKA

## UNDERSTUDIES

BECCA BOWDLER  
 LUCY BLUNT  
 SAFFRON HARRINGTON

OLIVIA RILEY  
 EWELINA RUSZKIN

## MEDIA

## STAGE MANAGEMENT

STAGE MANAGER  
 ETHAN SLATER

DEPUTY STAGE MANAGER  
 NICOLAS LAMY

ASSISTANT STAGE MANAGER  
 JULIAN SOUTHALL

## PRODUCTION SUPPORT\*

PRODUCTION MANAGER  
 JOHN CAMBLE

TECHNICAL MANAGER  
 SCOTT EVELEIGH

COMPANY STAGE MANAGER  
 MADDIE WHIFFIN

LIGHTING & SOUND TECHNICIANS  
 FIONA GRIFFIN  
 JOE MYLES  
 DAN PARKER

HAIR & MAKE-UP TUTORS  
 ANTONY DIXON  
 WAYNE HUMPHREY

HAIR & MAKE-UP TECHNICIAN  
 JESSICA HUTCHINGS

FINANCE COORDINATOR  
 ALISON HART

DESIGN TUTOR  
 WILL HARGREAVES

PRODUCTION DESIGN COORDINATOR  
 SAMUEL EDWARDS

SET BUILDER  
 ELLIOTT TRENT

SCENIC ART TUTOR  
 DEBORAH MITCHELL

SCENIC STUDIO MANAGER  
 PAUL GOSDEN

SCENIC STUDIO TECHNICIAN  
 SAM CLOWES

COSTUME MAKING TUTOR  
 KATERINA LAWTON

COSTUME SUPERVISION  
 TECHNICIAN  
 JENNIFER RIDGE

COSTUME MAKING TECHNICIAN  
 MILENA NAWROCKA

COSTUME AND PERFORMANCE  
 DESIGN TECHNICIAN  
 HELEN FORD

DYE ROOM TECHNICIAN  
 REBECCA RICHMOND

CASUAL TECHNICAL ASSISTANT  
 BRANDIE TUTTIETT

\* AUB STAFF/VISITING PROFESSIONALS